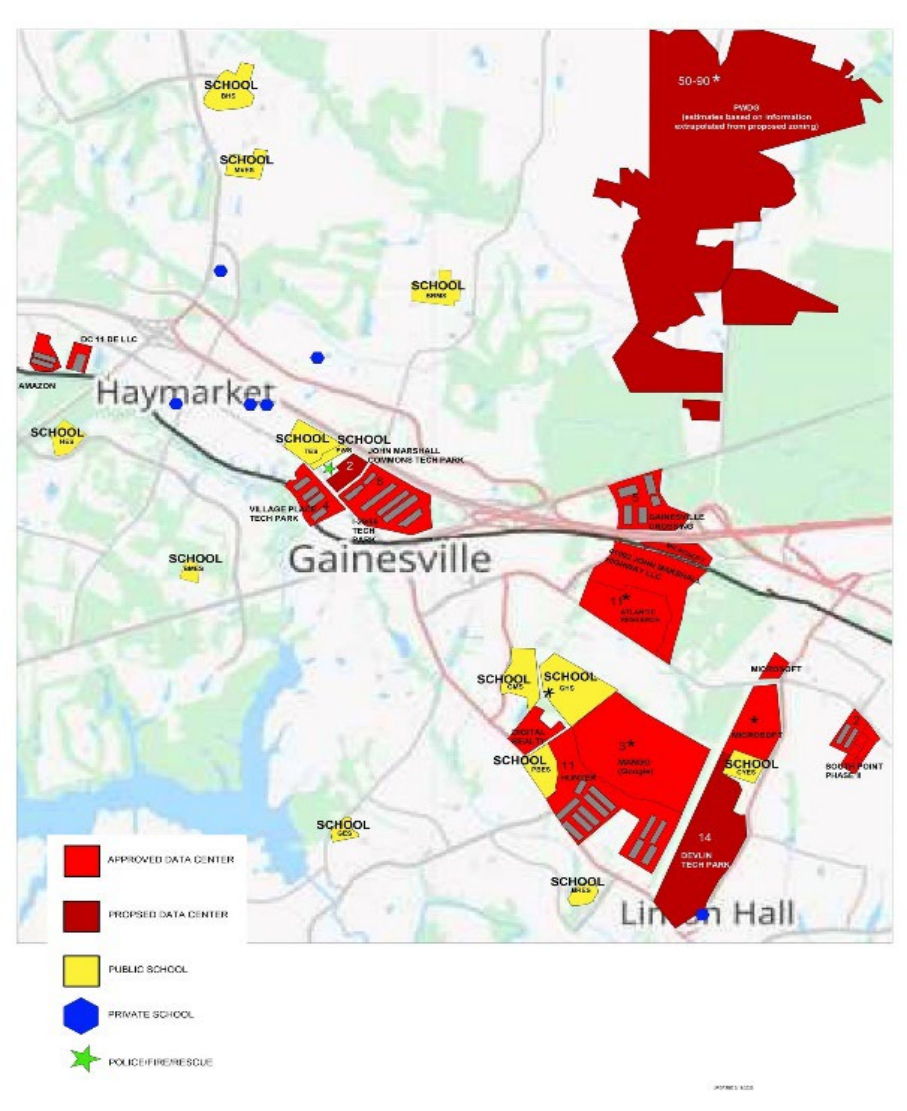


# Data center companies are taking over Gainesville, Bristow and PW County

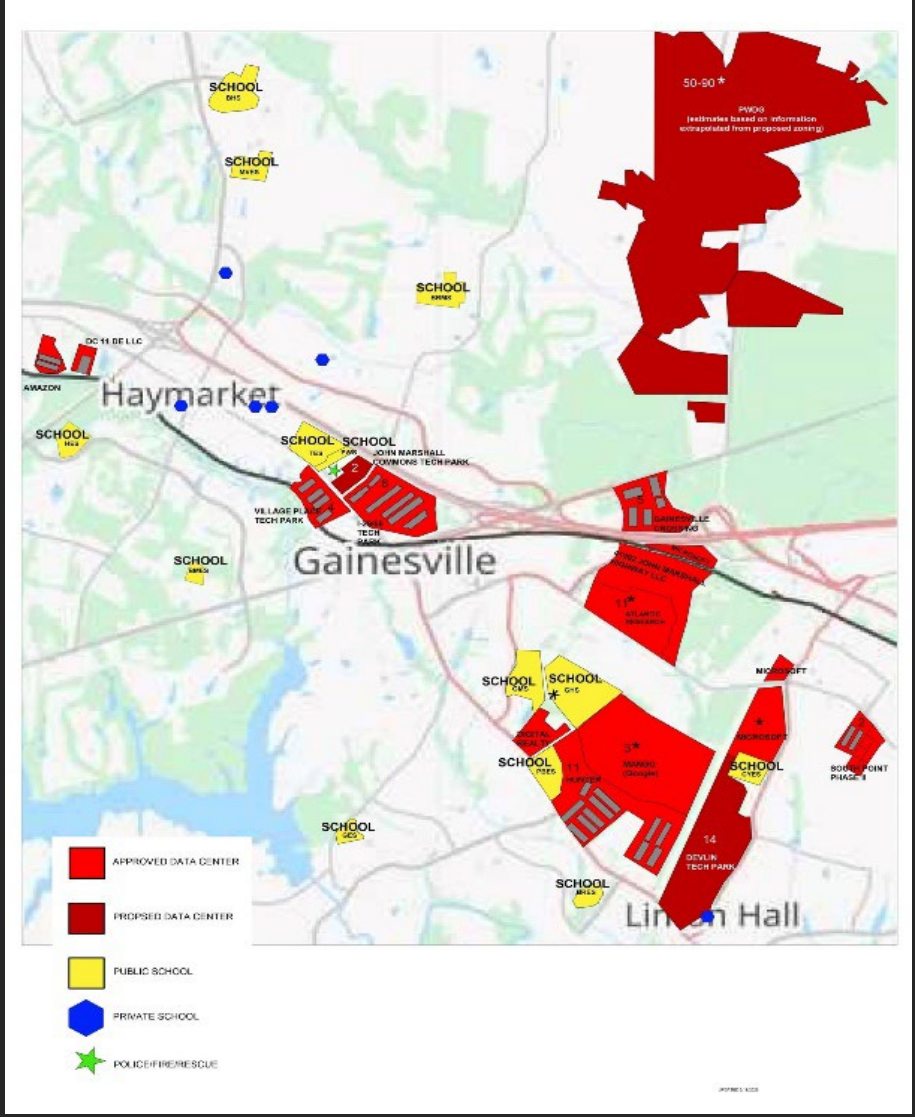




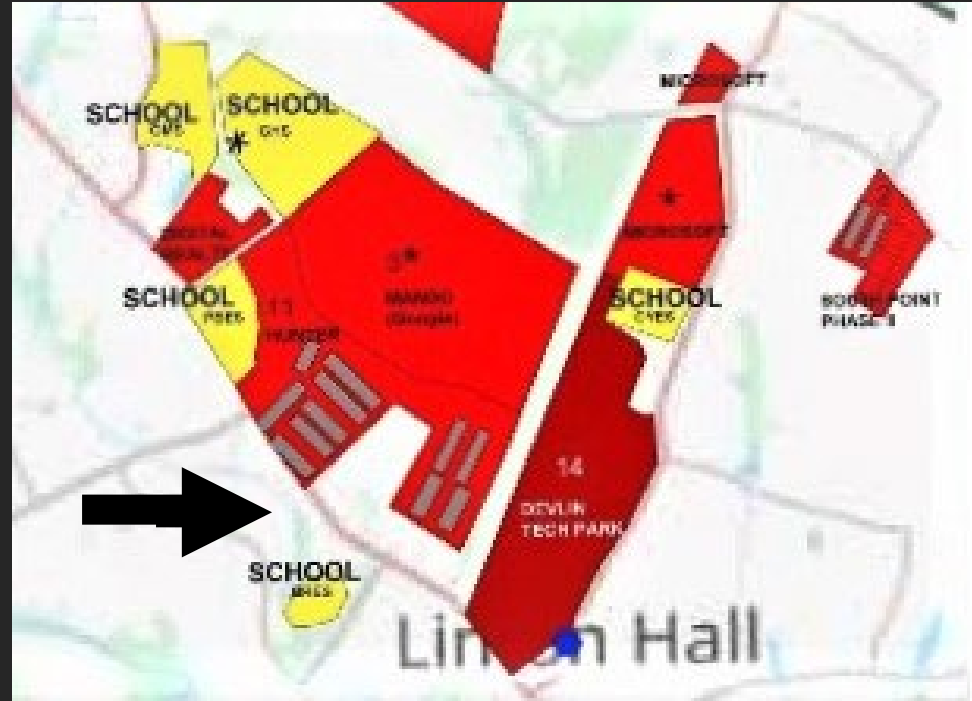
# The “Digital Gateway” – would add 27 million more square feet NORTH of I-66



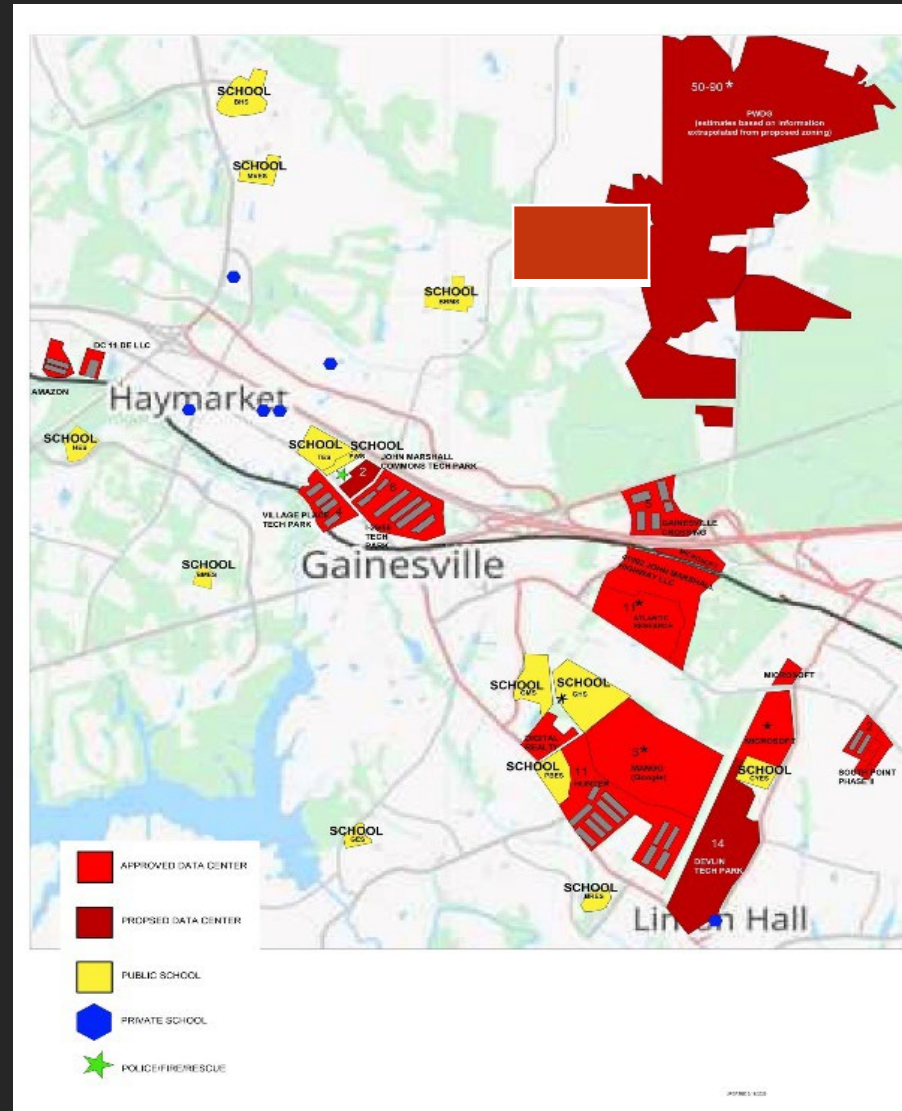
# Set for disaster - Gainesville and Bristow being surrounded by industry



# Some neighborhoods are already surrounded!

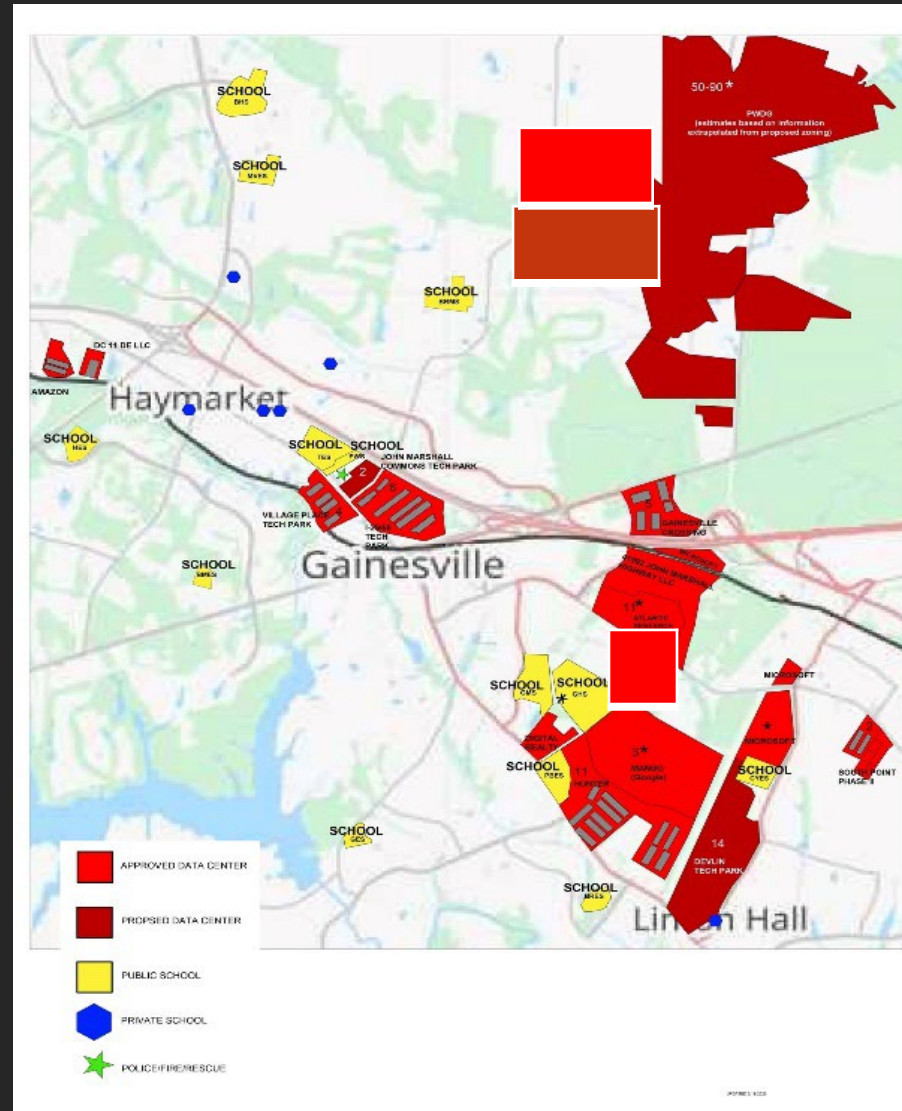


# There are dominos too -- add Smith's Crossing



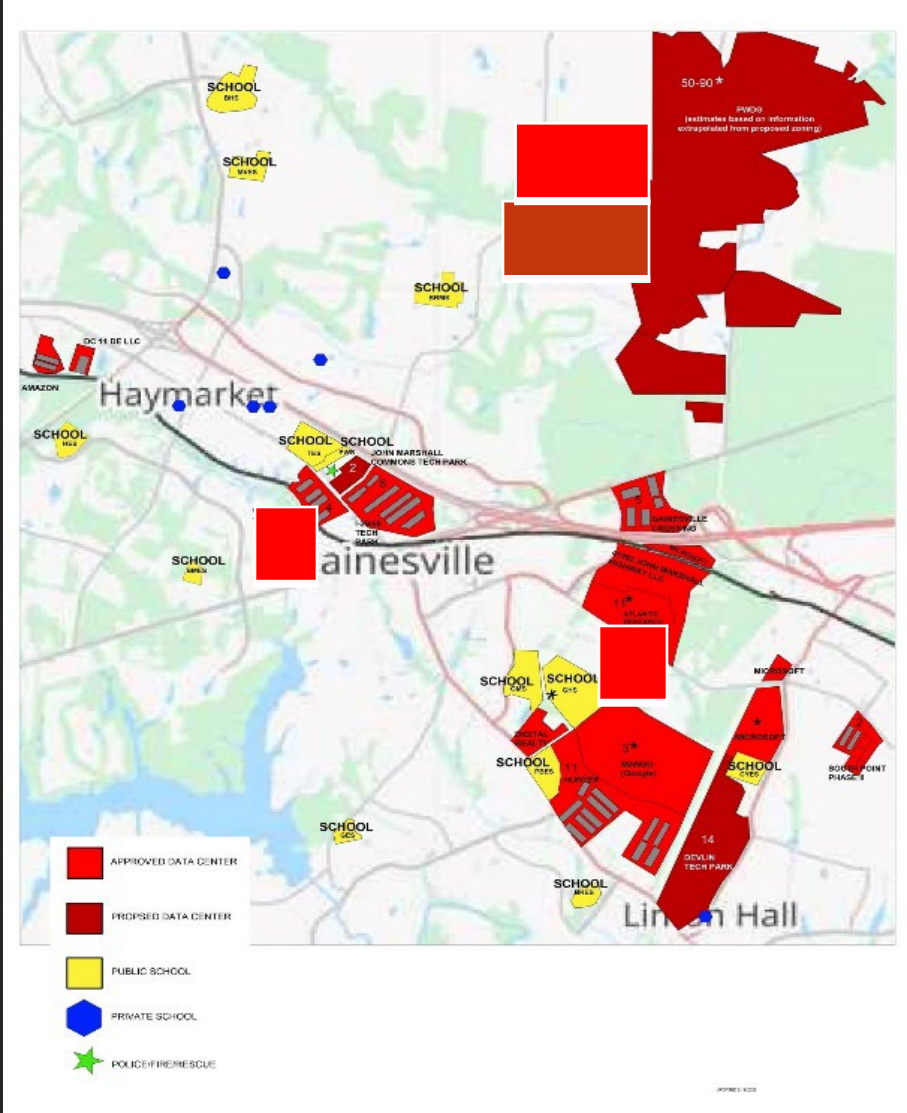


# Add the potential for the Jiffy Lube location

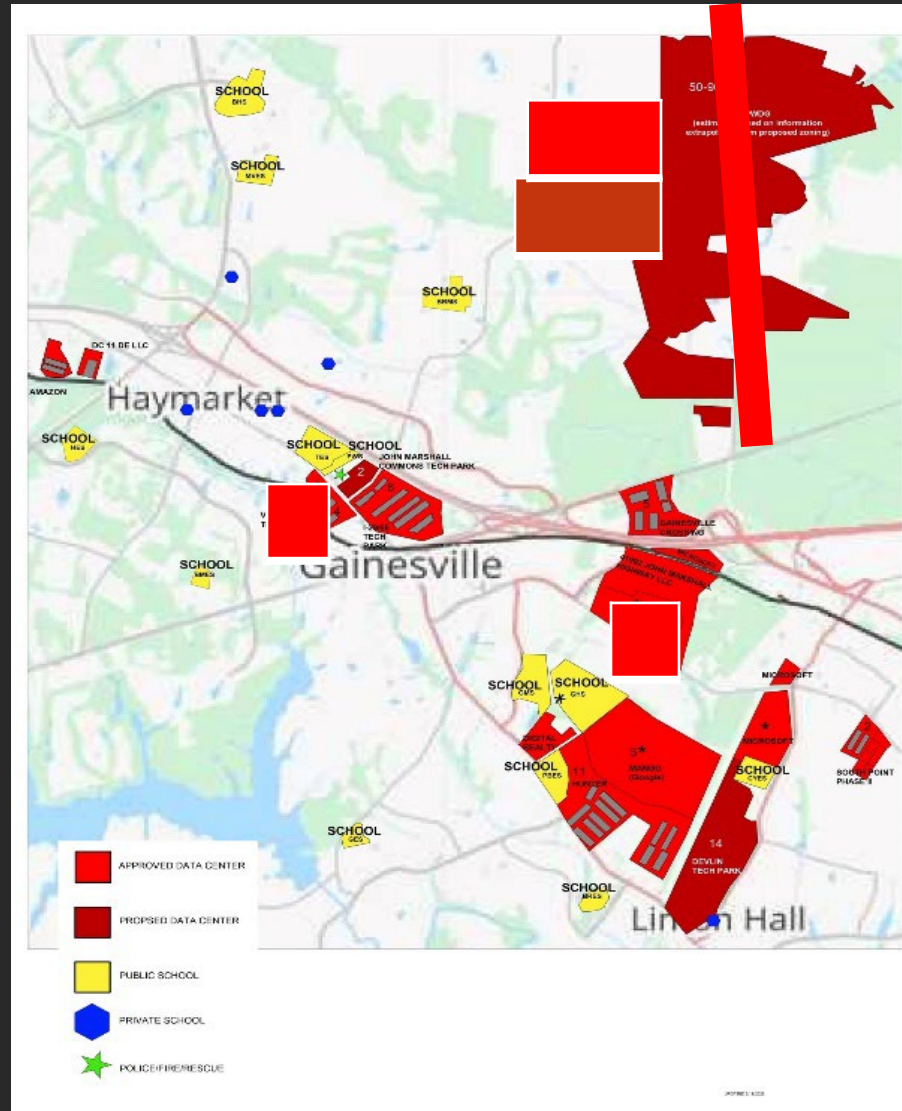




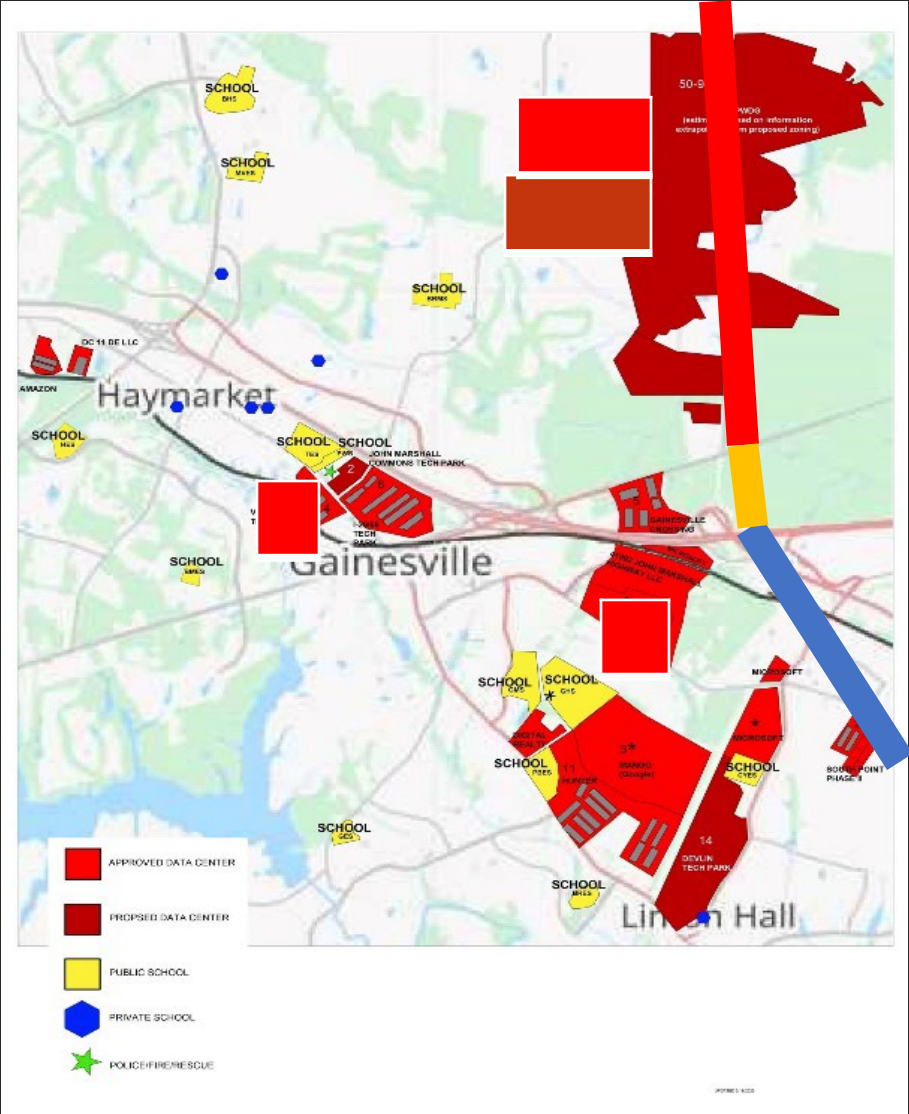
# Add Hillwood Camping Park – Just purchased



# Add a new four-lane highway



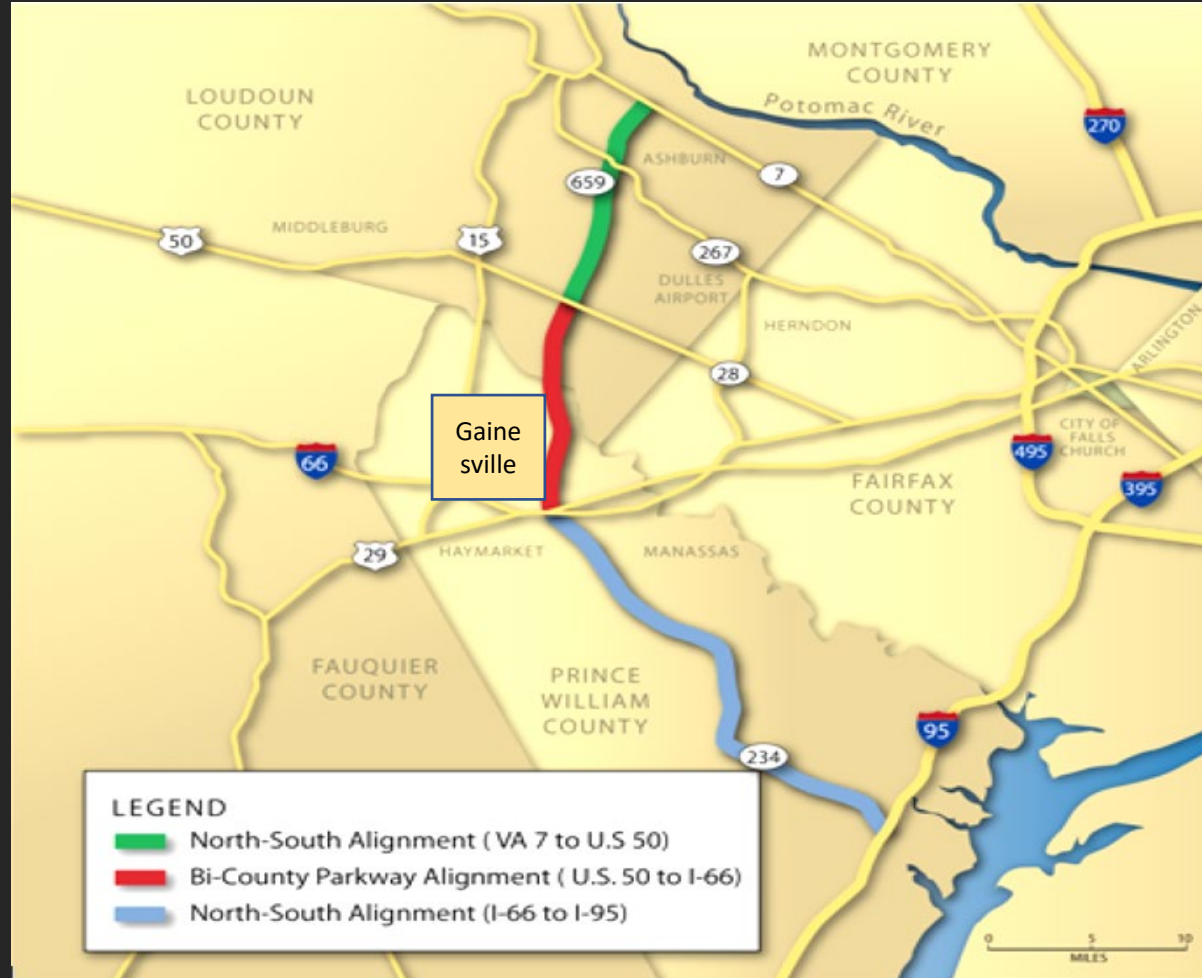
# Add -- connector to PW “Parkway”







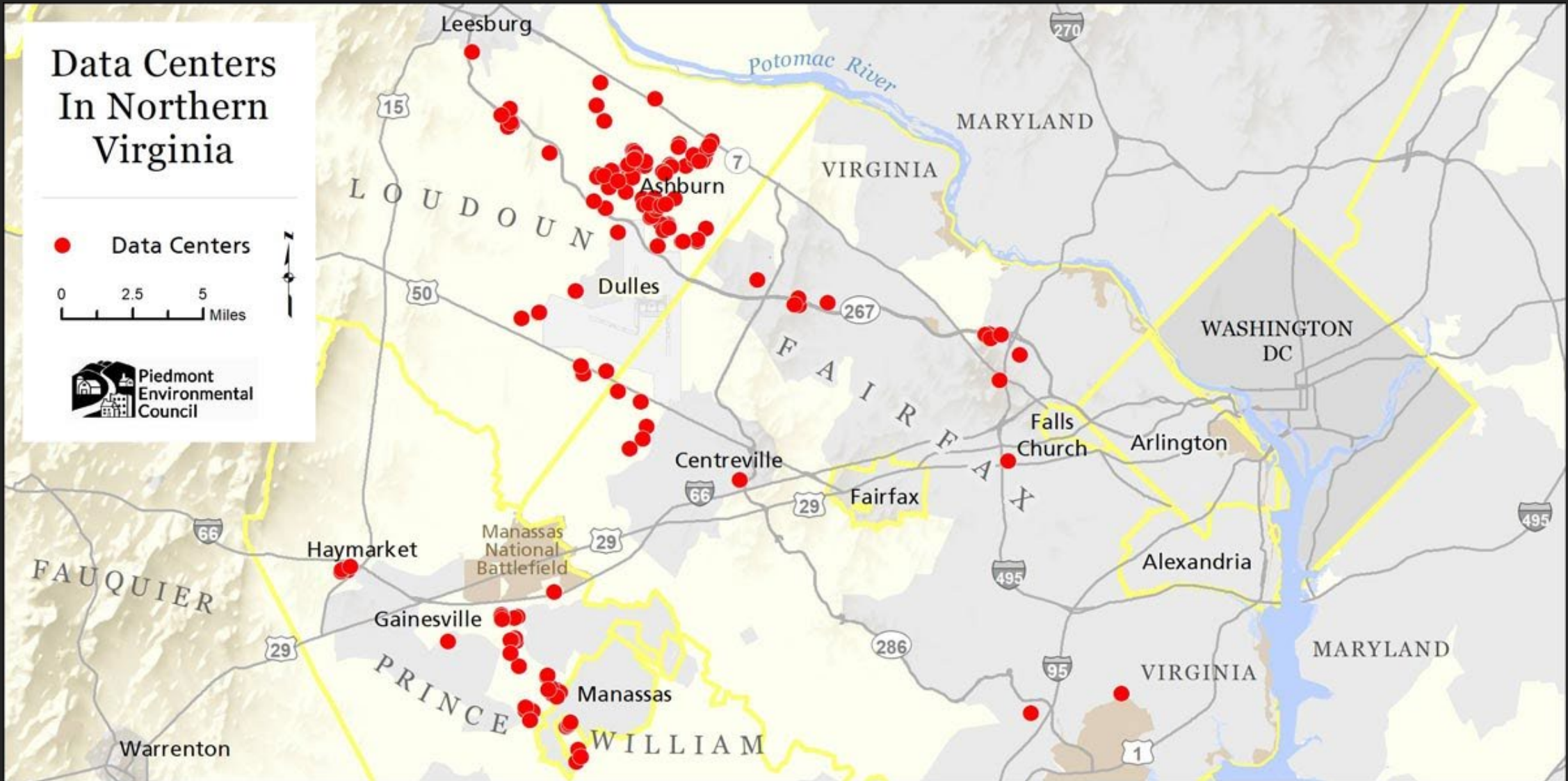
# Don't forget the long-planned Bi-County truck route from I-95 to Dulles



**And.. the Sanders Lane area, north of Sudley road, is in play too!**



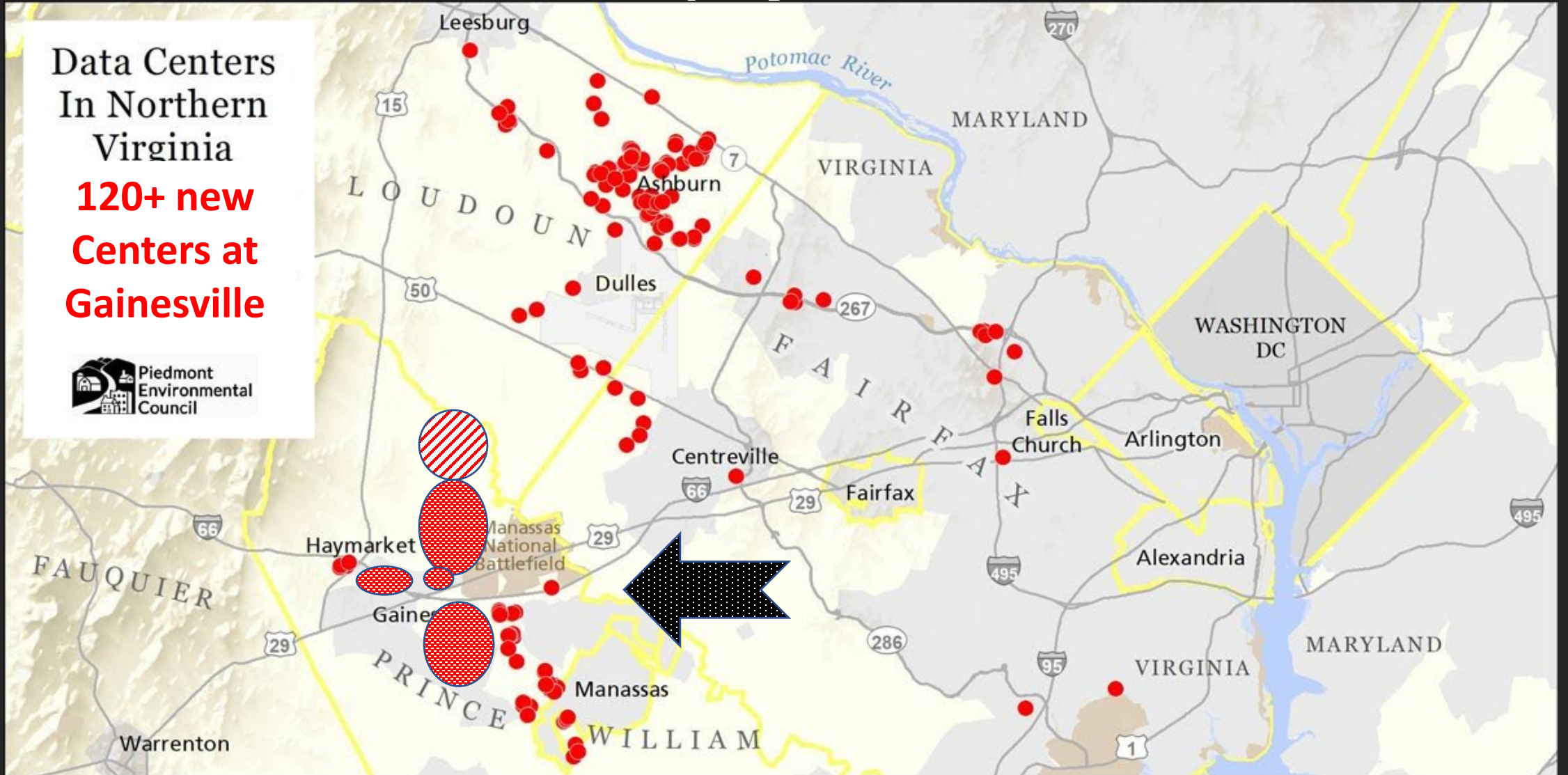
# Regional perspective





# Regional Perspective -- add the massive Gainesville-area projects

Data Centers  
In Northern  
Virginia  
**120+ new  
Centers at  
Gainesville**



# Gainesville and Bristow are headed for an industrial nightmare



# Twice what has been developed in Loudoun



**Courtesy of five, block-voting, members of the PW  
Board of Supervisors:**

**A. Wheeler**

**V. Angry**

**A. Bailey**

**K. Boddye**

**M. Franklin**

**Driven by:**



**Tone-deaf companies:**



**Rubber-stamped by the  
five County Board  
members**



**PW County needs to push the pause button and rethink this mess**



# Companies promise setbacks, screenings and height and noise limits



# Companies' broken promises!



**Want to buy a  
townhouse?**





**See the screen trees  
they planted?**

**The five, block-voting, County Supervisors  
refuse to look at documented truths**

**The County's own  
study found  
insufficient demand**

**Just 15% to 60%**



**The County has not accounted for most of the up-front costs or impacts**



# The five Board members have ignored many of the County's own Internal recommendations

- Planning staff,
- Historical commission,
- Watershed office, and
- Consultants



# Unconscionable tax give-away to data center companies

Currently 40% of the tax  
rate charged by  
neighboring counties



# **Why not double the tax?**

**Faster revenue**

**Still competitive &**

**Locate data centers in appropriate places**

**No net tax revenue for  
schools for a decade**

**But.. residents'  
taxes will continue  
to rise!**





# Secret deals -- public officials signing hidden agreements with companies



**Construction will go on for 15 years or more!**



# Drinking water threats



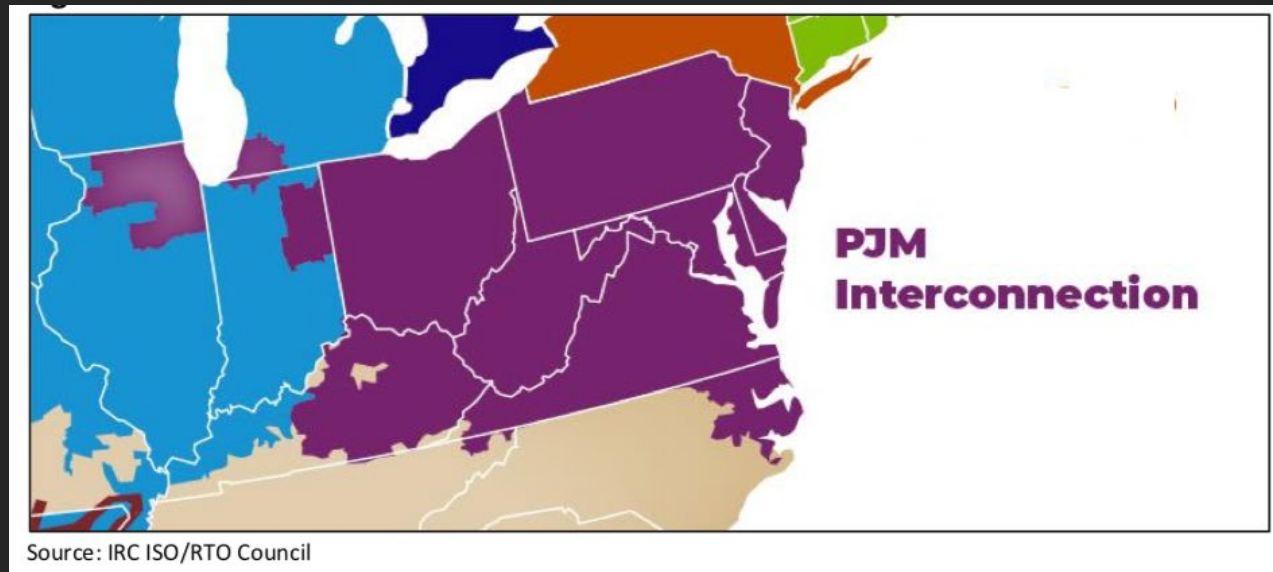
# Noise levels of jets sitting on a runway



# Energy infrastructure paid for by rate-payers



# A crashed regional power grid



# Air pollution from 5,000 trailer-sized diesel back-up generators In Gainesville area

- Burning 180,000 to 350,000 gallons/hour



**Don't be fooled – these are immense industrial buildings:  
generators – blowers – toxic metals – chemicals – power  
hungry – city block sized!**





# There is hope!

## Signs of a turn-around for Gainesville area voters

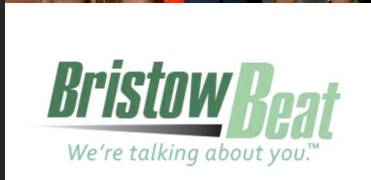
- A 20-point win by Bob Weir
- Strong challengers to board chair Wheeler
- Getting the issue in the media
- A rich and well-researched set of future legal challenges



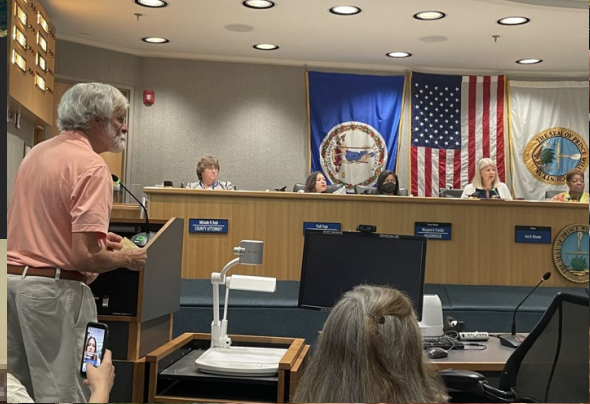
# Taking the fight to the data center companies and the County Board



Ken Burns



# Thousands of people speaking out!



# **Recruiting powerful voices to the table**

**Fairfax Water and Fairfax County**

**Legislators and members of Congress**

**More than 50 HOAs**

**State and federal agencies**

**Public interest organizations and social justice groups**

# Asking the courts for help

Filed so far:

- A suit by Gainesville Citizens for Smart Growth
- A suit filed by the Oak Valley HOA



**Now we are urgently looking to the electoral process!**



# Cynical politics at play

**Five County Board members hoped to approve data centers well before their re-election campaigns**



**Five supervisors, including Wheeler, are being showered with data center developer “donations”**



Ann Wheeler

**\$230,000**

(80% data companies, construction unions,  
Pageland owners)

Deshundra Jefferson

**\$60,000**

(95% citizens)

**Wheeler also bought tens of \$thousands in data industry stocks prior to proposals being submitted**



# Looking to the Dem. Chair Choices

**Wheeler** – An incumbent funded by the data center industry, construction unions & Pageland landowners with four times as much funding as a result.



**Jefferson** – A tough challenger who is not beholden to any financial interests and can look at the future of Gainesville and HH objectively



# The Republican Primary chair race

**Jeanine Lawson** - current Brentsville Supervisor, is strongly opposed to the PWDG



**Kenn Knarr** - supports the PWDG and owns land at Pageland that is signed-up for data center purchase



**Remember:  
in Virginia, you can vote in a  
primary for any candidate no  
matter your party affiliation**

# Voting Options: Pro or **Con** PWDG?

PRIMARY

GENERAL

Wheeler

**Jefferson**

**Lawson**

Knarr

Democrat Nominee

Republican Nominee

**PW BOCS CHAIR**

# HOAs and allies are in the fight for the long haul



**There is a special opportunity to push  
the pause button**

**Vote June 20!** ✓





**Reach out and encourage residents  
to stop the uncontrolled data center  
takeover and:**

**Vote! ✓**

**June 20**