

# PRINCE WILLIAM COUNTY

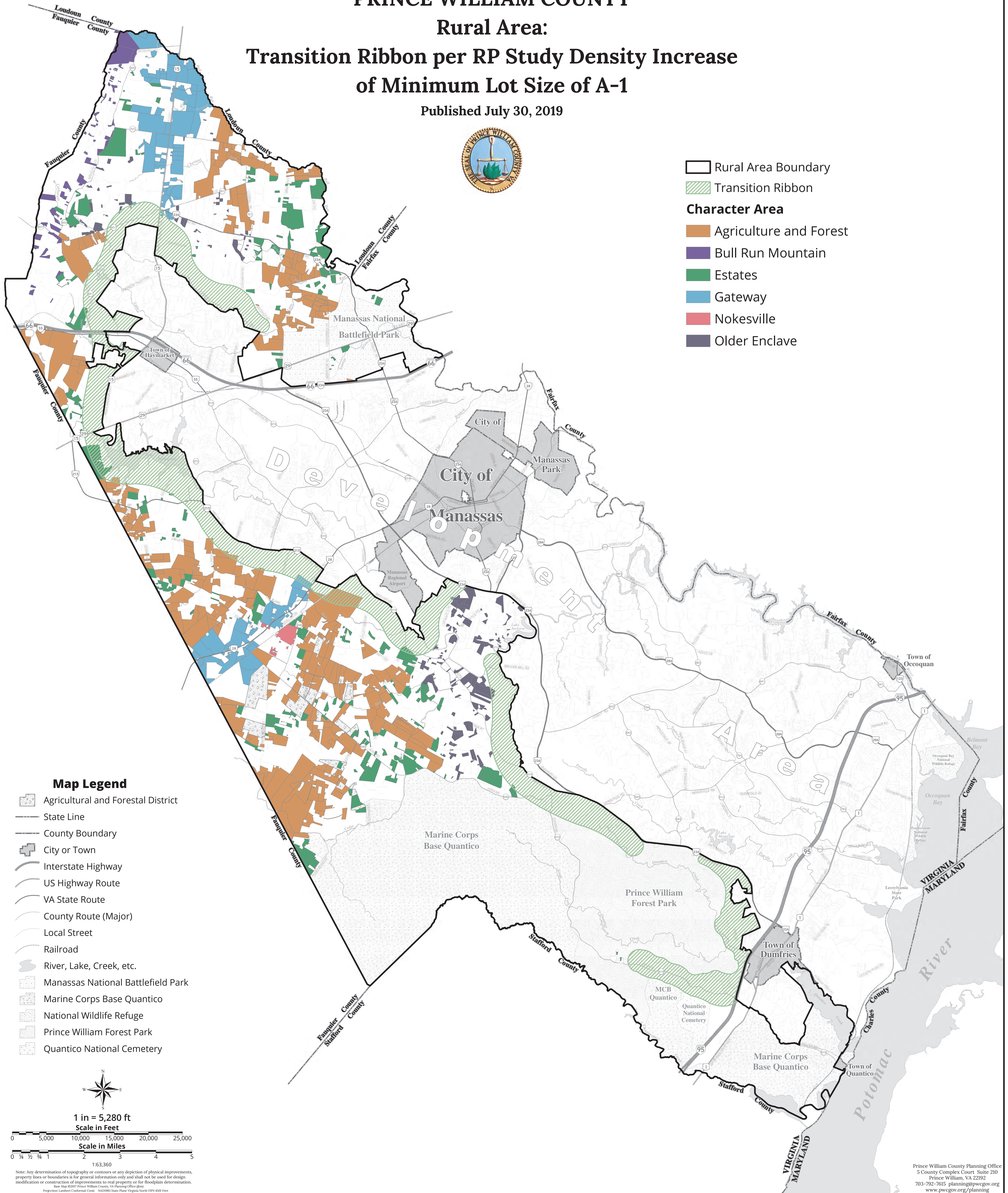
## Rural Area:

### Transition Ribbon per RP Study Density Increase of Minimum Lot Size of A-1

Published July 30, 2019

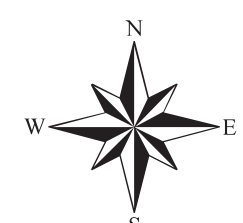


- Rural Area Boundary
- Transition Ribbon
- Character Area**
- Agriculture and Forest
- Bull Run Mountain
- Estates
- Gateway
- Nokesville
- Older Enclave



#### Map Legend

- Agricultural and Forestal District
- State Line
- County Boundary
- City or Town
- Interstate Highway
- US Highway Route
- VA State Route
- County Route (Major)
- Local Street
- Railroad
- River, Lake, Creek, etc.
- Manassas National Battlefield Park
- Marine Corps Base Quantico
- National Wildlife Refuge
- Prince William Forest Park
- Quantico National Cemetery



1 in = 5,280 ft

Scale in Feet

0 5,000 10,000 15,000 20,000 25,000

Scale in Miles

0 1/4 1/2 1 2 3 4 5

1:63,360

Note: Any determination of topography or contours or any depiction of physical improvements, property lines or boundaries is for general information only and shall not be used for design, modification or construction of improvements to real property or for floodplain determination. Base Map ©2017 Prince William County, VA Planning Office (pwc). Projection: Lambert Conformal Conic. NAD83 State Plane Virginia North FIPS 4501 Feet.